

Delivering A New Standard Of Reliability & Productivity.



PHOENIX™

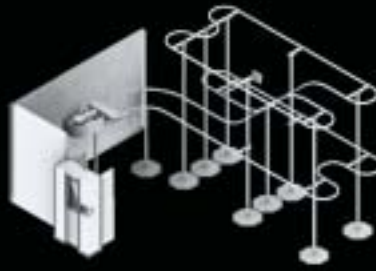
AUTOMATED UNIFORM MANAGEMENT SYSTEM

Just like the legendary and powerful bird, the superior PHOENIX system rises above all competition!



PHOENIX™ will greatly improve your productivity. It only requires a single attendant to reload clean uniforms — and, this is done during off-peak. Counter attendants are no longer needed to dispense clean uniforms or to load and retrieve locker bags. The system is very cost-effective, providing a fast payback — usually in less than 18 months.

Let us design a custom solution!



Creative custom designs are available to fit in the tightest spaces.

Can be located at the ceiling, or the floor below, to free up your valuable floor space.



PHOENIX™ incorporates the latest technology for advanced management of uniforms and locker bags. Employees can be recognized by various means: barcode, magnetic strip, embedded smart chip identification cards, keypad entries, fingerprint identification, retinal scans, etc. A single uniform scan (barcode or RFID tag) brings the employee's dedicated conveyor slot to the reloading station, and can then relay the transaction to your uniform management program.

Operation

At the beginning of their shift, employees swipe or scan their I.D. cards, and the system automatically delivers their locker bag and clean uniform (through the sliding safety door). The door then closes automatically, and the system is ready for the next employee.

After changing into their uniforms, in a smaller space-saving dressing room (not the usual large and expensive locker room), they place their personal clothing in the locker bag, and return it to the system.

At the end of their shift, employees swipe or scan their I.D. cards again, and the system returns their locker bag. After changing into their personal clothes, they deposit their soiled uniforms in an (optional) return chute, and return the locker bag to the system — all without the need for a counter attendant.



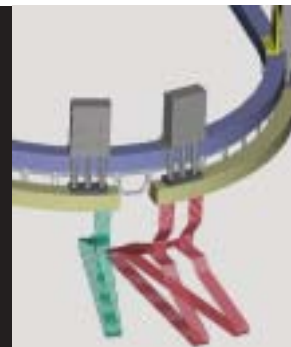
During off-peak hours, a single attendant scans and reloads clean uniforms onto the system. PHOENIX can scan clean uniforms with barcodes or RFID tags — even man readable labels can be accommodated. The system offers a single-scan capability that not only brings the employee's dedicated slot to the reloading area, but can “notify” your uniform management program that the garment has been returned from the laundry and reloaded onto the conveyor.



The wider single dedicated slot permits more space for each employee's locker bag plus several clean uniforms.



Two slots per link (for uniform issue only) reduces conveyor size by 50%. Could also be used to separate locker bag from uniforms. Three slots (not shown) available with robotic arm to auto-dispense garments such as hospital lab coats and scrubs.



Pneumatically activated “retainers” secure hangers in adjacent employees' dedicated slots. This enhances the security for each employee's property, and substantially reduces the likelihood of retrieving the wrong uniform.



We Thrive On Comparison

FEATURE/SPECIFICATION	BENEFIT TO CUSTOMER
Lower cost	Faster return on investment. Payback usually 18 months or less — and eliminates costly lockers
Increased Productivity	Counter attendants are no longer required to retrieve uniforms or locker bags
Flexible Modular Designs	Can be configured to fit your room and located at the ceiling to free up floor space
Faster travel speed and takes the shortest route (left or right)	Shorter retrieval time — employees get to work faster
Enclosed track	Safer, quieter and cleaner (less chance for dirt or lubricant to damage garments)
Automatic sliding safety door	Easier for employee to handle his/her uniforms and locker bag (without fumbling with a manual door)
Advanced Smart Chip memory	A dedicated stand-alone computer is not required
Narrower door opening (only 8")	Prevents entry into rear area, and provides improved security — other competitive systems have much wider openings
Special factory-applied chain lubricant	Only requires additional lubrication after 3 to 5 years of service — versus 6 months to 1 year for competitive systems
4 directional continuous rollers (chain support)	Smoother, stronger and less wear
Wider chain link slots	Provides more hanging space for each employee. Chain links are available in three configurations, including a single large slot, or double and triple slots
Weight capacity (67 lbs./foot)	Greater payload — especially important with locker bags
Durable aluminum construction	Looks great and doesn't chip or wear
Standard inverter controlled drives	Smoother start/stop reduces maintenance and eliminates noisy clutches
Dual caterpillar drives — (for inclined systems) located on the rise section	More power to handle chain pull, and much easier to access for maintenance
Powerful 1.5 HP UL Approved motors	Other competitive systems use weaker 1.0 HP motors



The dual caterpillar drives (for inclined systems) located on the rise section provide easier access for maintenance, and offer more power to handle the increased chain pull.

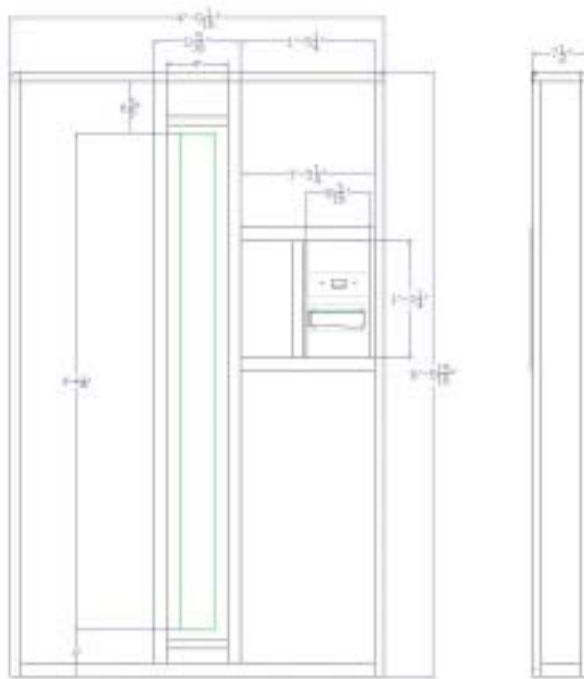


The sliding door is only 8" wide. This prevents someone from entering the system, or having access to the uniform storage area. For safety purposes, the automatic door will retract if an obstacle is in the way.



Multi-read RFID tags can be scanned and recorded, as uniforms pass through the narrow door opening. Due to their different operating mechanisms, other competitive systems require much wider and less secure door openings — this also limits their ability to scan RFID tags.

PHOENIXTM
AUTOMATED UNIFORM MANAGEMENT SYSTEM



Durable all-aluminum construction. The automatic sliding access door has a Lexan™ safety panel for added security. The door will automatically retract if an obstacle is in the way.



Advanced Soiled Uniform Return Chutes

PHOENIX systems are available with (optional) integrated uniform return chutes. Garments can be scanned with barcodes or RFID tags. The system can also “notify” your uniform management program that a particular garment has been returned for cleaning.

Employees scan their I.D. cards, and the drop chute unlocks. If the uniforms have RFID tags, the system will automatically scan and record receipt of the garment. Bar-coded uniforms can be scanned by the employee, before dropping into the return chute.

PHOENIX[™]
AUTOMATED UNIFORM MANAGEMENT SYSTEM

Marketed By:

TRIAD HANDLING SYSTEMS INC

75 Lake Wind Road
New Canaan, CT 06840
Tel: (203) 966-6615
info@triadhandling.com